

## 48 Sheet / 6x3m Walk-in Light Box

**Diversity\*** Available for wall mounting purpose only.

**Safety\*** The unit is designed in line with the "Health & Safety" regulations of UK. This includes sealed IP 65 lamp holders, non-slip surface inside, safety harness for workers within, easy access side entrance and a safety rail by the entrance for additional security amongst all the features.

**Tensioning System\*** The poster is tensioned by a lower rail system and lateral swing-arm system that can adjust the poster tolerance up to 108 mm horizontally and 105 mm vertically.

**Outer Dimensions\*** 6.500mm x 3.445mm x 650mm(w)

**Poster Size\*** 6.170mm x 3.115mm

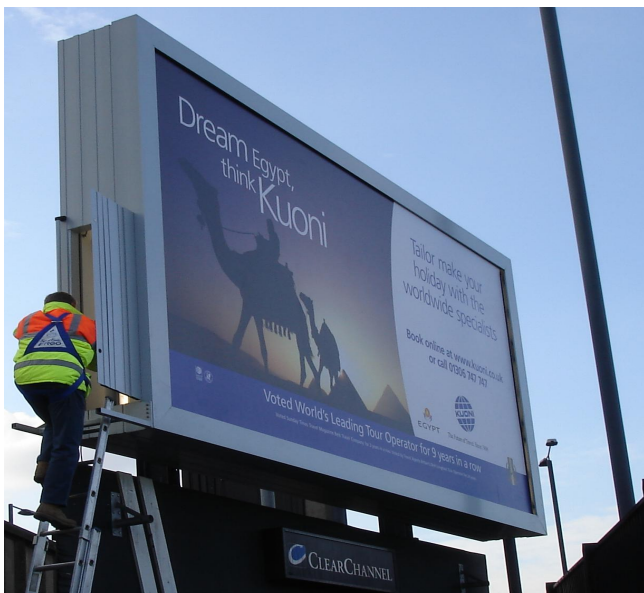
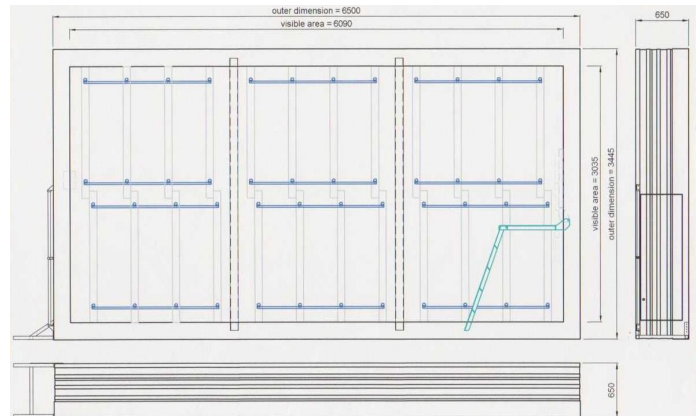
**Visible Area\*** 6.090mm x 3.035mm

**Weight\*** ≈ 900 kg depending on the design

**Power Supply\*** 24x58W bulbs with electric ballast

**Poster Preparation\*** PVC material is used.

**Poster Fixation\*** Inside the unit, the poster or face is connected by a 8-10mm Ø keder to each side. The tensioning system is located on the bottom and the left or right side (depending on the position of the entry door) for easy access.



**Maintenance\*** The unit and its tensioning components along with the individual IP 65 light housing components are durable and ensure easy maintenance. Poster change with the easy tensioning system makes the unit a very reliable and quick unit to post and maintain.

**Warranty\*** Our guarantee covers 100% of the unit with a duration of 2 years excluding wear & tear parts i.e. light bulbs, anti-slip covers and belts.